

ADA Delivery Bin Blue Gear Installation Instruction

The purpose of this document is to demonstrate the proper way to install the new blue gears onto the ADA delivery bin.



Tools needed:
1/4" Nut driver
Phillips screwdriver
Alignment pin
Alignment clip

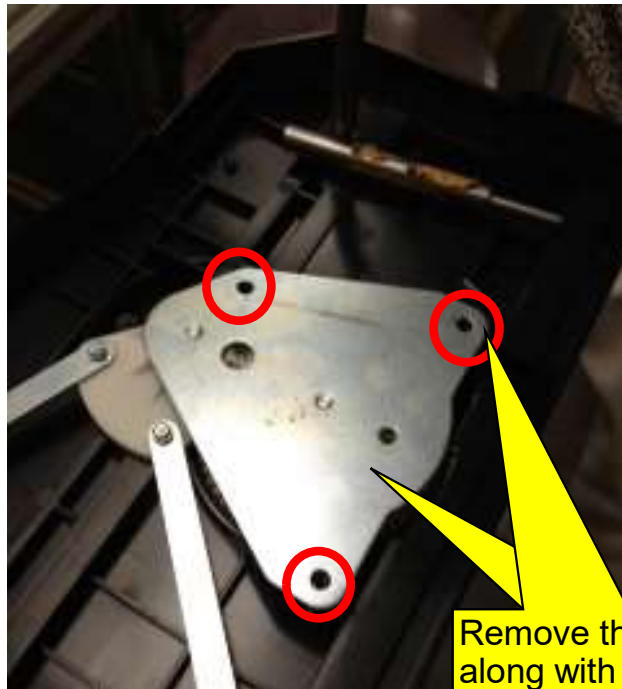
Left Side



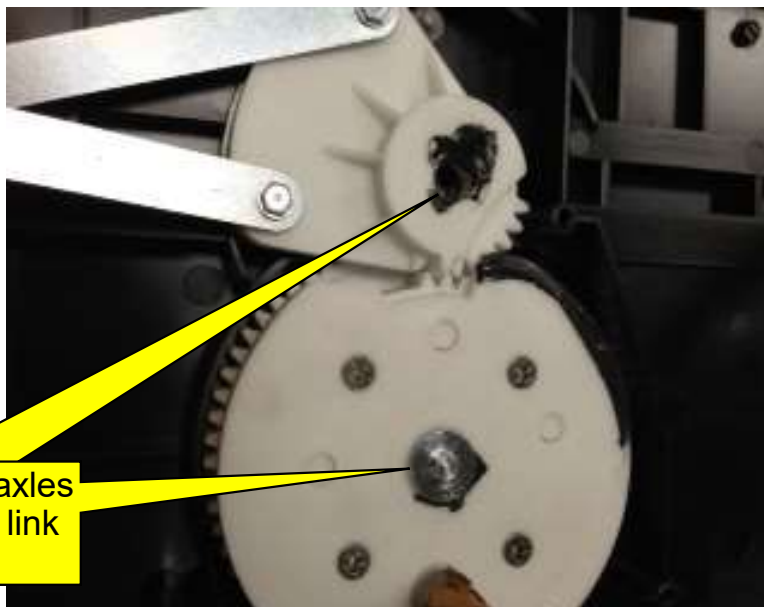
Right Side

ADA Bin Front View

Rotate the delivery bin onto it's side a shown.



Remove the three screws along with zinc plate to uncover the gears.

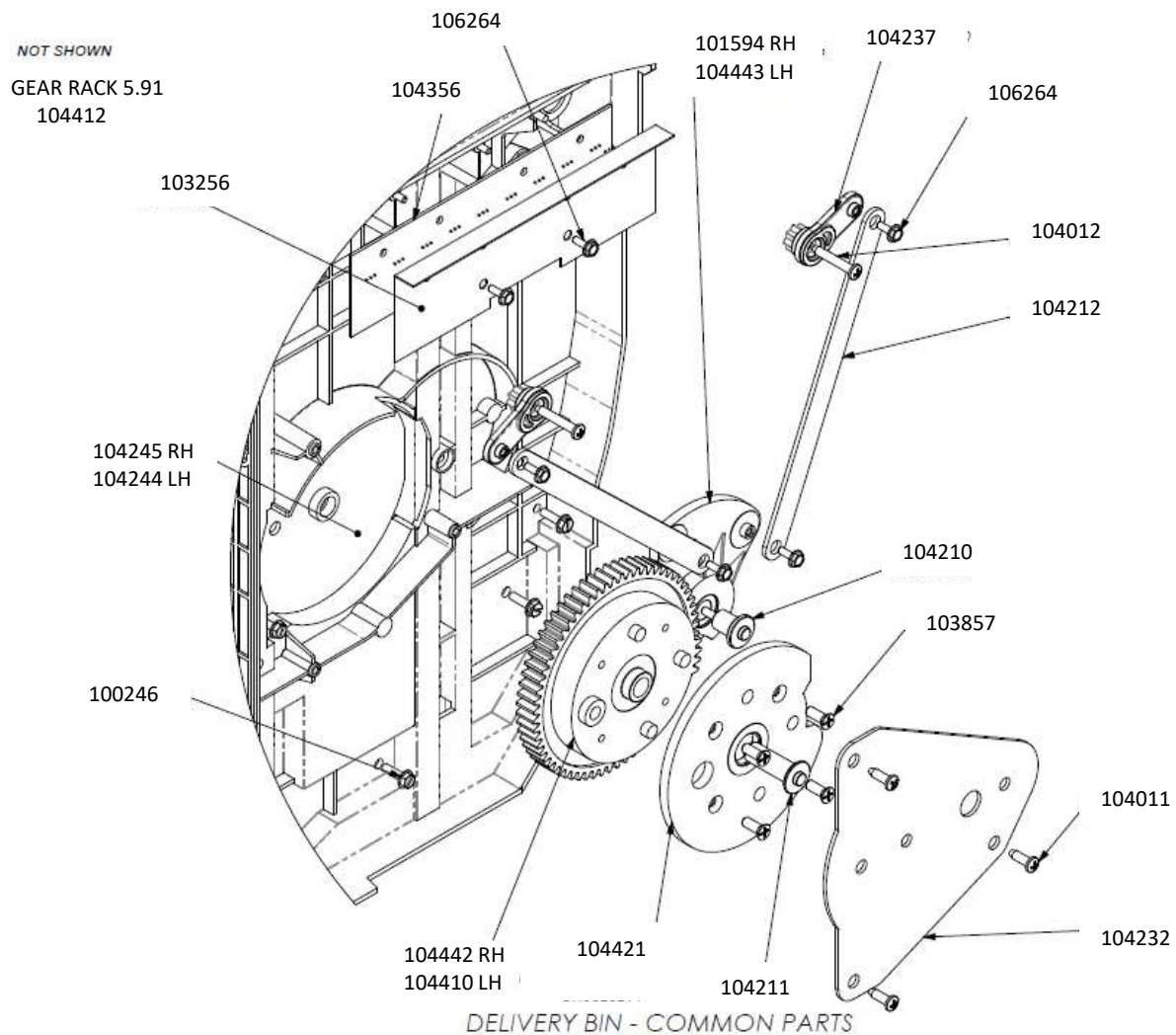


Remove the gear axles from both the cam link and gear/cam.

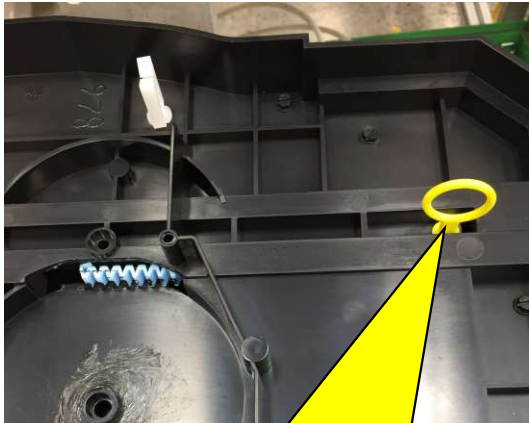
NOTE: Do not discard any hardware that you remove from the gears because you will need them to reinstall the new gears back onto the assembly.



Alignment pin
Alignment clip

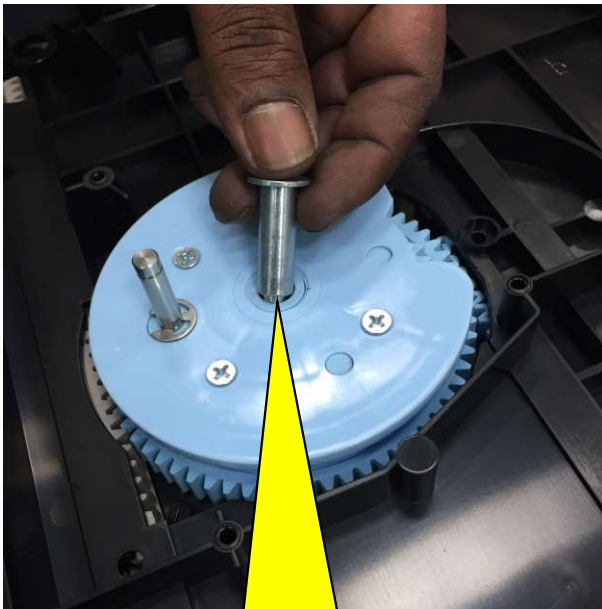
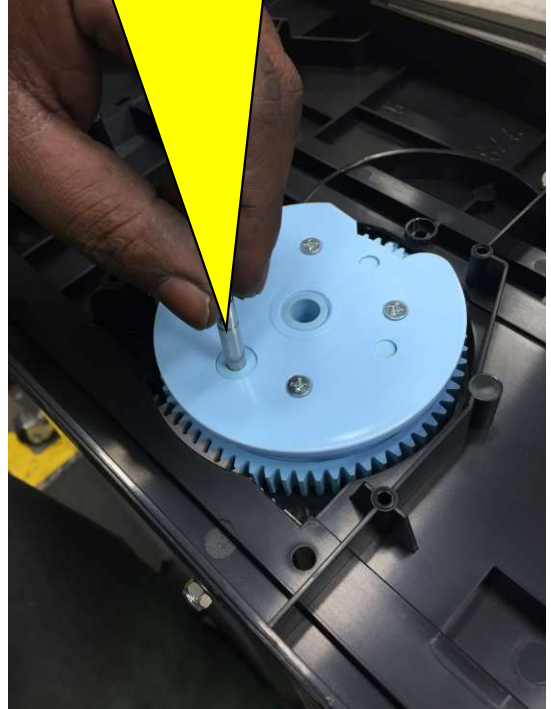


Right Side Shown



Line up the hole in the sidewall with the hole on the bin gear rack by moving the door handle up and down. Once the holes are lined up, insert the Alignment clip shown in the hole to keep the door in place.

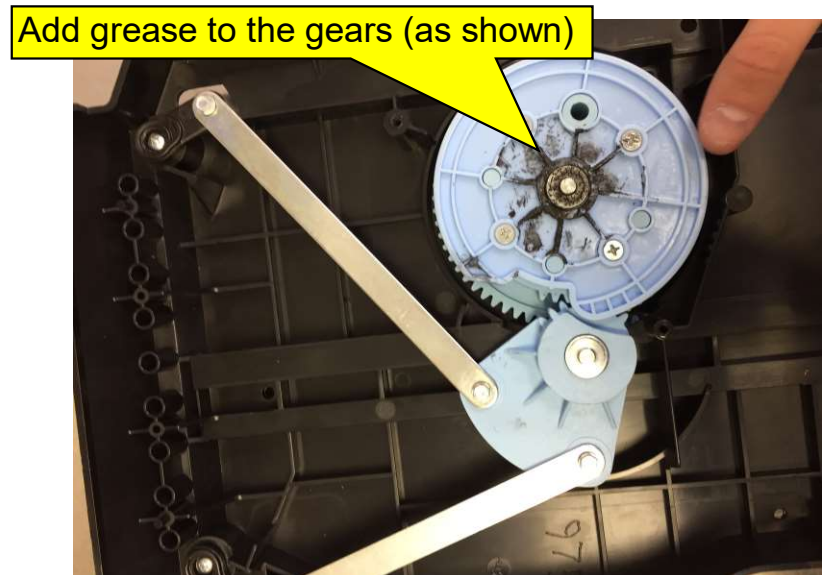
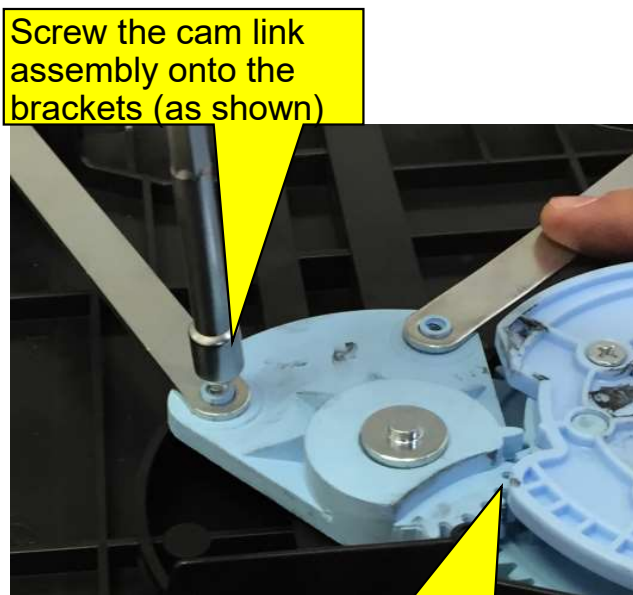
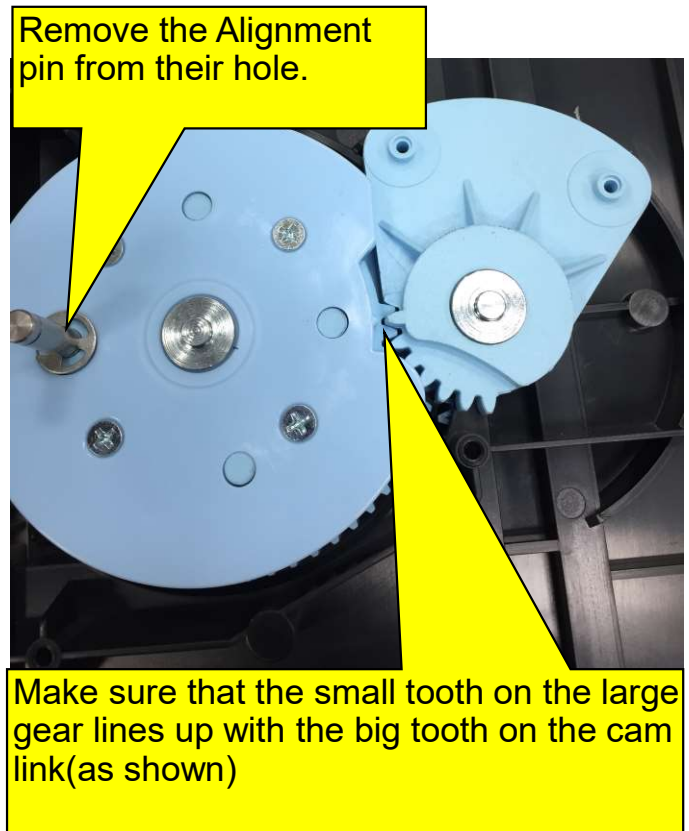
Place the gear on the sidewall as shown by lining up the holes. Insert the Alignment pin in smaller hole to keep the gear in place.



Insert the gear axle into the hole on the gear/cam.



NOTE: Make sure you look at the back side of the gear to ensure you are installing the right or left gear to the proper side of the assembly.





Install the zinc plate with three screws to cover the gears.

Repeat these steps for the gears on the other side of the Bin Assembly

